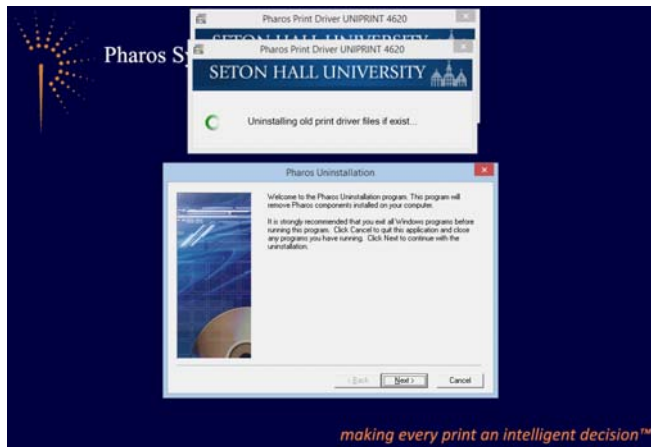
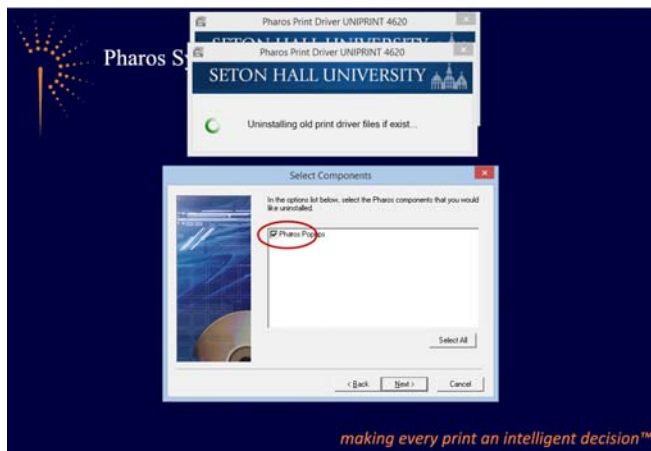


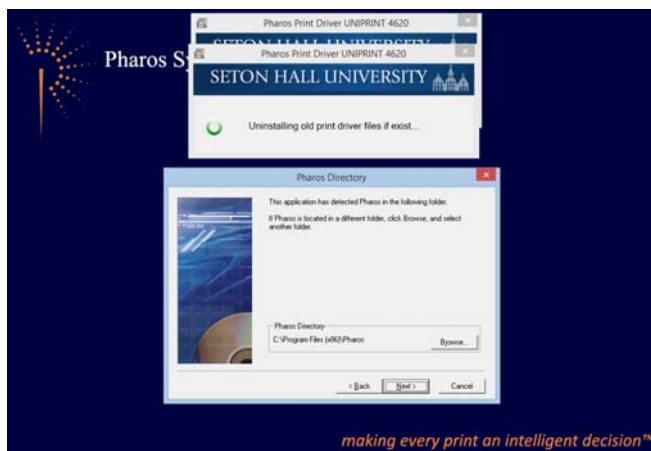
The new Pharos driver installation is now started. The first step is to uninstall the old driver from the machines. Click **Next** to start the old Pharos Uninstallation.



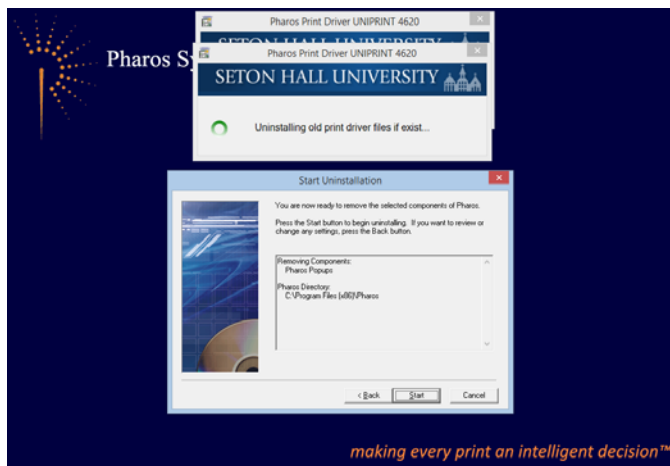
Select the Pharos Popups check box and click **Next**.



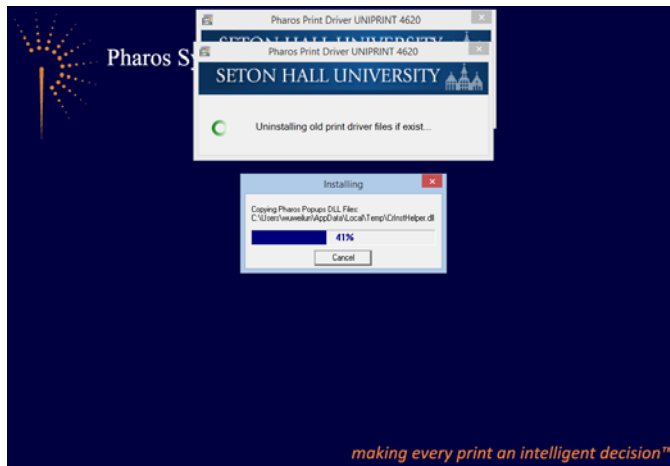
Click **Next** to confirm the Pharos Directory.



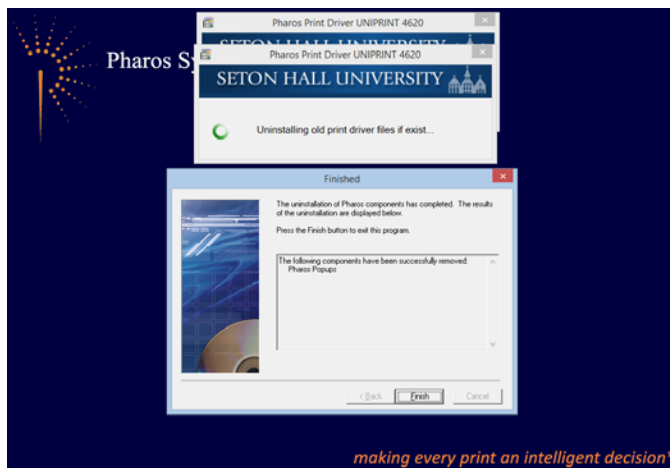
Click **Start** to begin the uninstallation process.



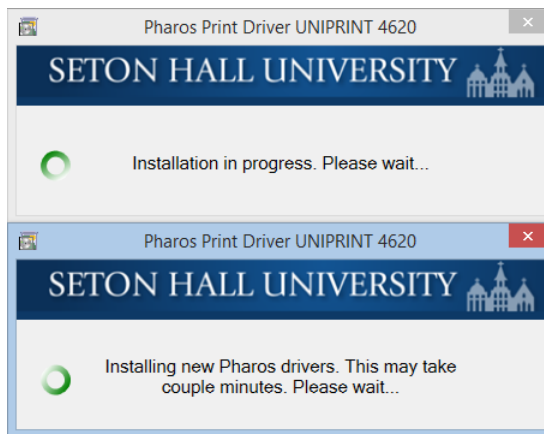
The old Pharos driver uninstallation has been started. Please wait.



The old Pharos driver has been removed. Click **Finish** to exit the dialog.



The new driver installation will be started automatically. It will take couple minutes. Please wait.



Click **OK** to finish the installation. The new Pharos drivers have been installed on the machine and ready to use.

