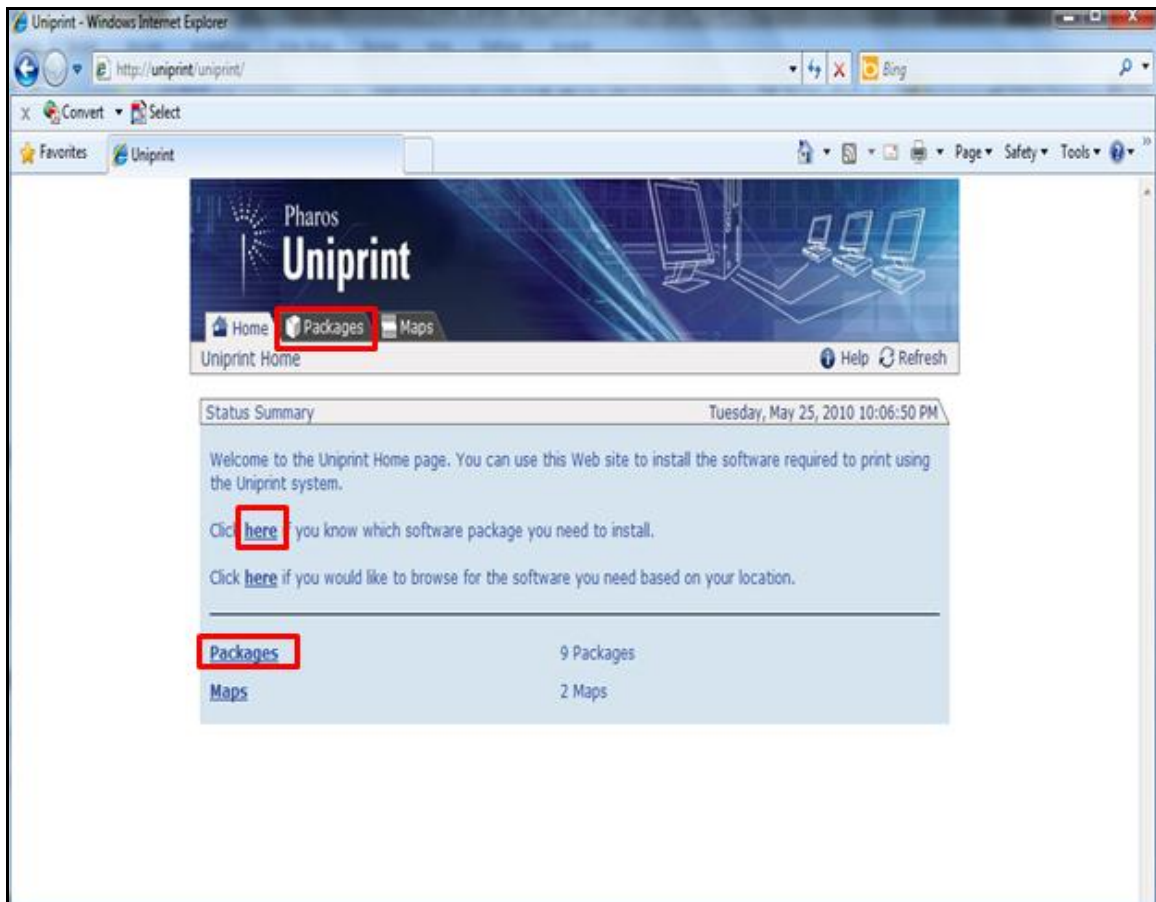


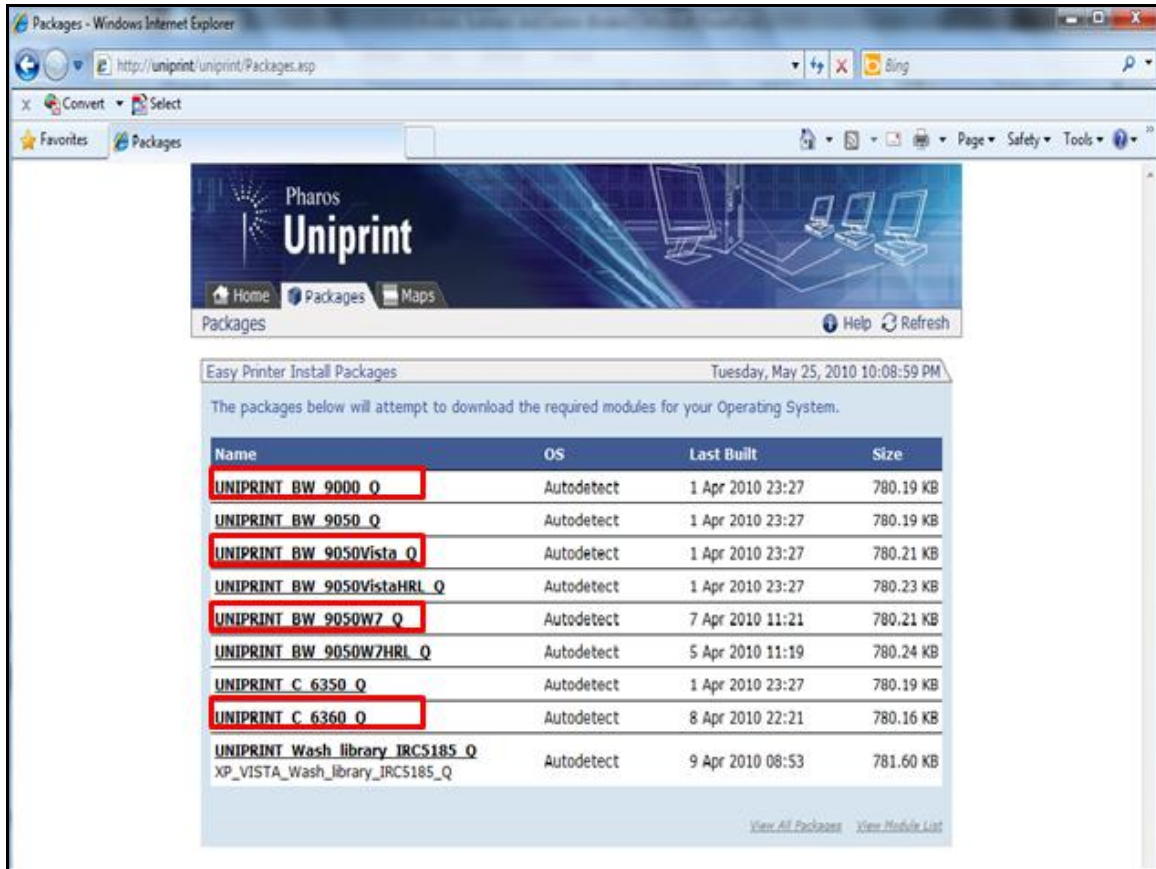
INSTALLING UNIPRINT PRINTERS

In order to print on the Seton Hall campus, a user must have the Uniprint drivers installed onto his/her personal computer or laptop. Below are step-by-step instructions on how to do so. Users must follow these steps for each print queue driver they want to install.

1. From your web browser, type <http://uniprint/uniprint> into the search bar. Then click on one of the “Packages” links highlighted below:



2. Several different types of packages will be available.



UNIPRINT_BW_9000_Q is the print queue for **Windows XP** machines to send print jobs to all of the printers in the public labs on campus. This includes the printers in Info Commons, Jubilee Lab, Nursing Lab, and the Language Lab.

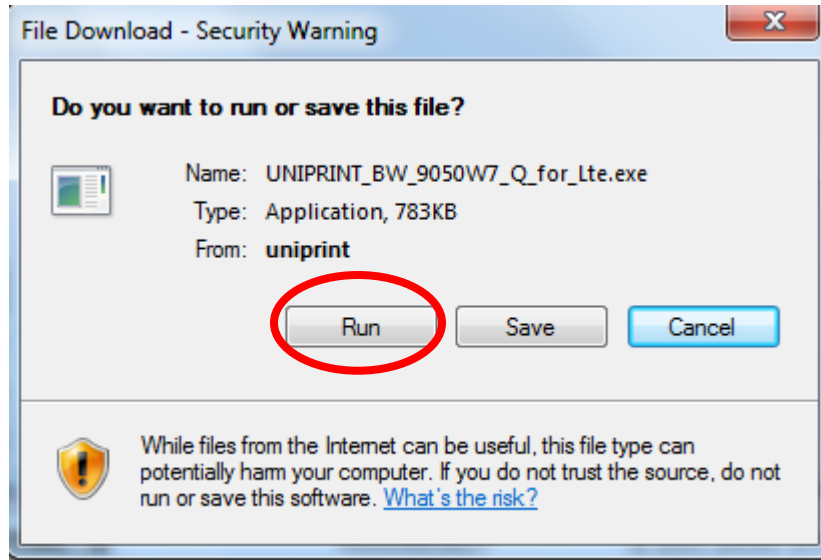
UNIPRINT_BW_9050Vista_Q is the print queue for **Windows Vista** machines to send print jobs to all of the printers in the public labs on campus. This includes the printers in Info Commons, Jubilee Lab, Nursing Lab, and the Language Lab.

UNIPRINT_BW_9050W7_Q is the print queue for **Windows 7** machines to send print jobs to all of the printers in the public labs on campus. This includes the printers in Info Commons, Jubilee Lab, Nursing Lab, and the Language Lab.

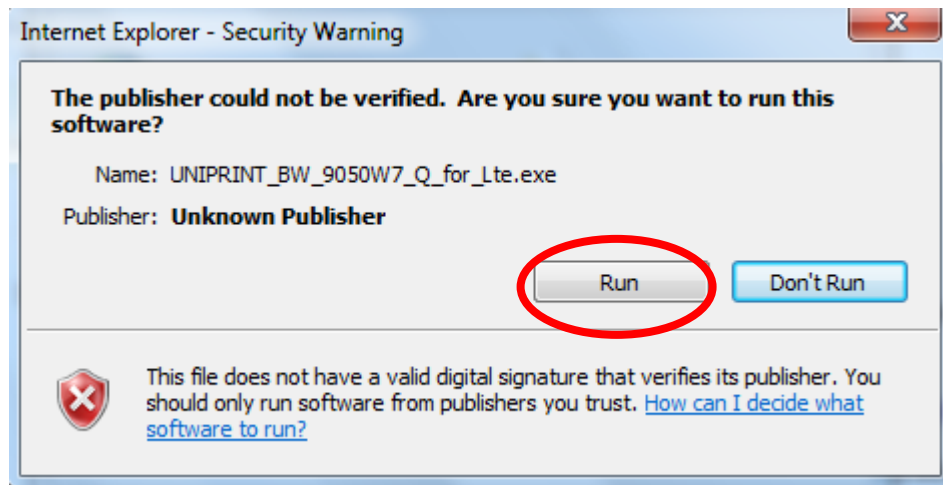
UNIPRINT_C_6360_Q is the print queue for the **Color Printer in Info Commons**. Printing costs \$.65 per page

3. Select the package that you want. For instance, after one selects UNIPRINT_BW_9050W7_Q from the list, the following box appears:

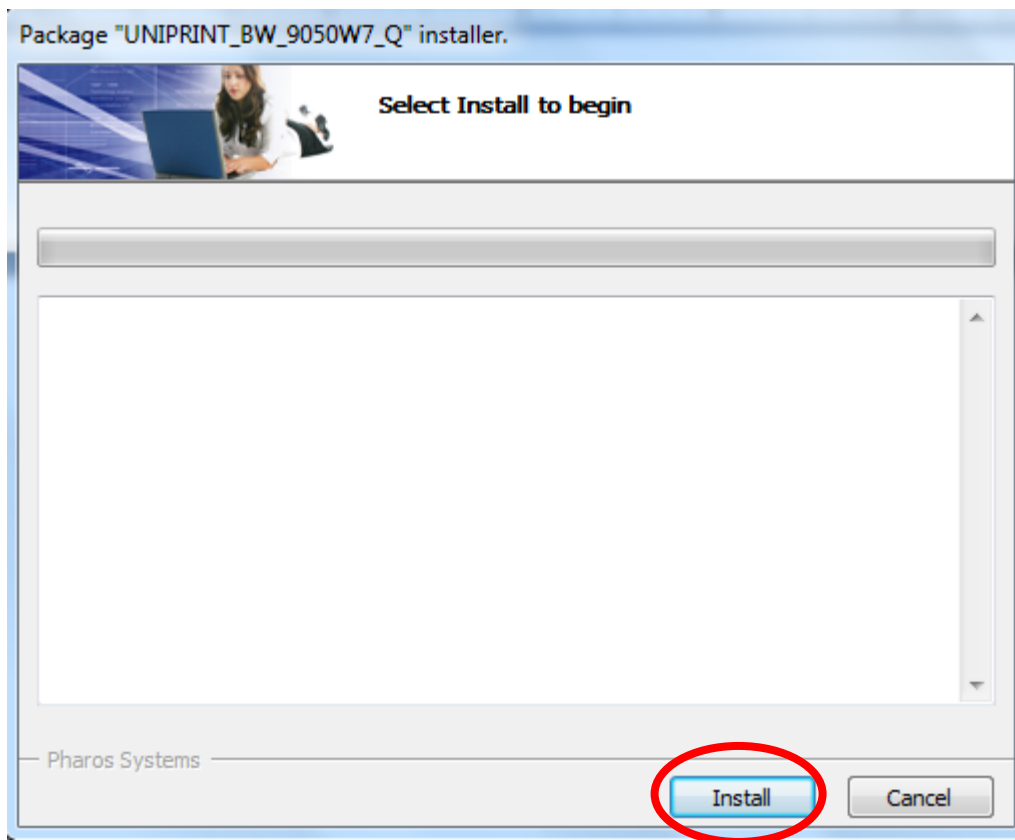
Select “Run.”



4. Select “Run” again on the next window.



5. At the next window, click on “Install” as seen below.



8. Once the installation is complete, select “Finish.”

